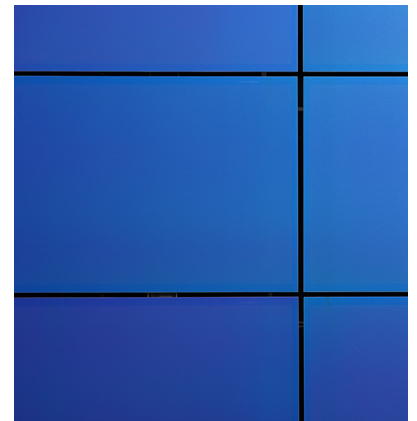
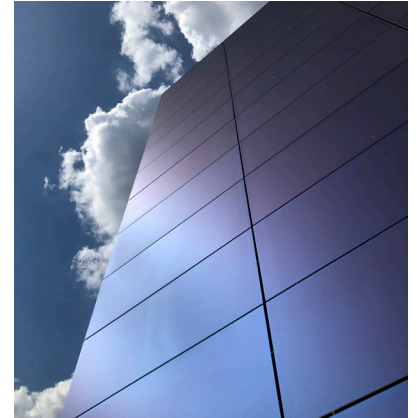




Empower your facade



The facade of the research laboratory of the Helmholtz-Zentrum Berlin is used for basic research to further develop efficient and cost-effective thin-film solar cells. The matte, homogeneous design of our thin-film modules provides the special look.



28 MWh

Energy yield per year



9,900 kg

CO₂ savings per year based on country-specific emission factors



Blue
7003

Customer:	SCHRAG Fassaden GmbH
Architects:	DGI Bauwerk Gesellschaft von Architekten mbH
Project realization:	2020
Location:	Berlin, Germany
Building typ:	Laboratory
Facade area:	378 m ²
Number of modules:	360 modules
Plant power:	48.60 kWp
Color:	SKALA Blue
Project partners:	SCHRAG Fassaden GmbH
Photos:	SCHRAG Fassaden GmbH, HZB