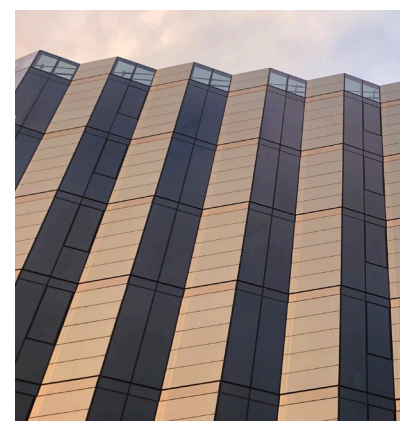


Spencer Street in Melbourne (AU)



Empower your facade



On Australia's first solar facade, transparent window surfaces were combined with opaque solar modules consisting of light grey SKALA modules. The different facade materials are optimally orientated the solar radiation.



75,73 MWh

Energy yield per year



58 310 kg

CO₂ savings per year based on country-specific emission factors



Light Grey
G004

Customer:	Fethers architectural pty ltd
Architect:	Pete Kennon
Project realization:	2023
Location:	Melbourne, Australien
Building type:	Commercial building
Facade area:	1203 m ²
Number of modules:	1220 modules
Plant power:	146 kWp
Color:	SKALA Light Grey
Project partners:	Fethers architectural pty ltd
Photos:	Fethers architectural pty ltd